

STATE OF ARKANSAS  
STATE HIGHWAY DEPARTMENT

PLAN OF PROPOSED BRIDGES  
ON  
OZARK-MULBERRY ROAD  
FRANKLIN COUNTY

ROUTE 64 SEC. 3  
JOB NO 494

EMERGENCY FINANCIAL F.A.P. NO. 30-REO. SEC. "F"

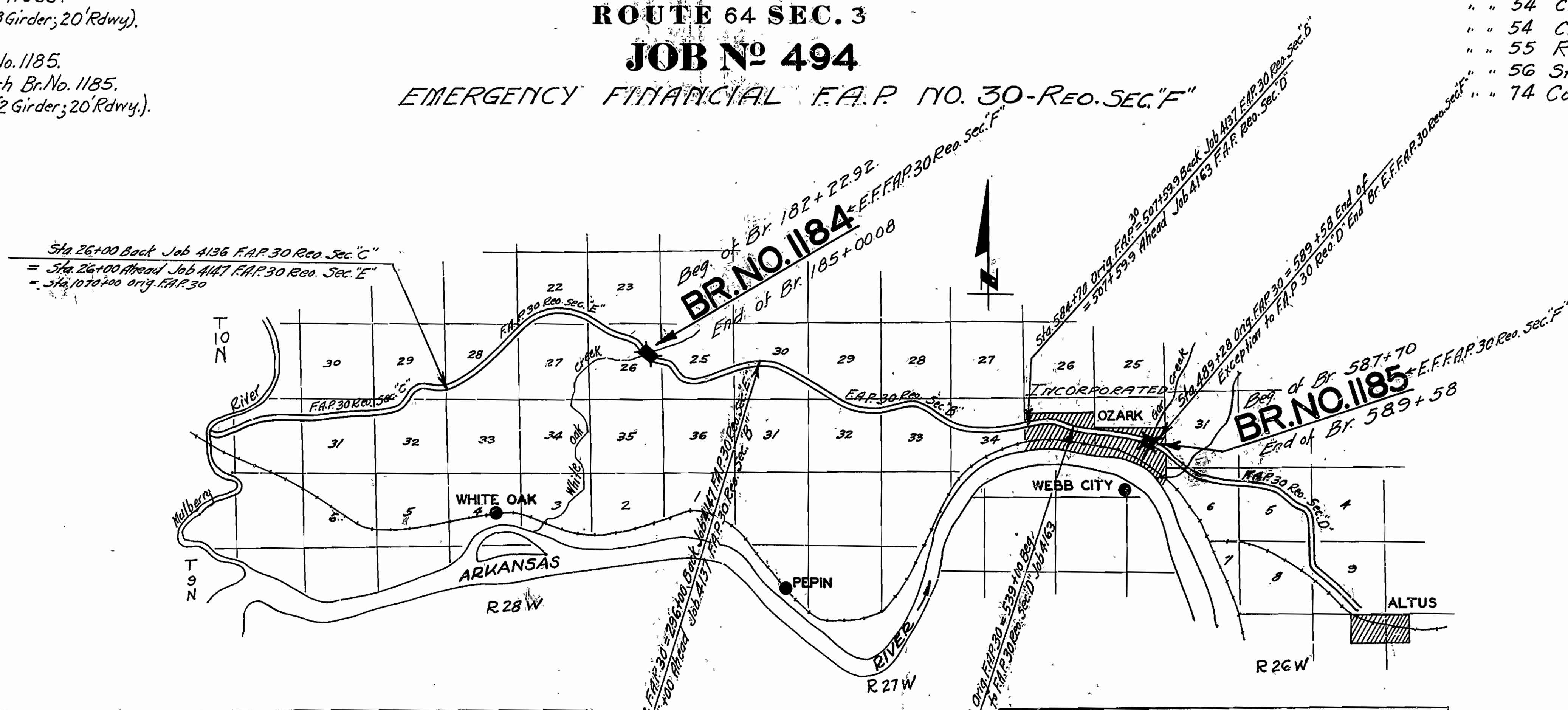
Proj. Dis. Ozark-Mulberry Road Franklin Co. DR=1611			
YEAR	JOB NO.	SHEET NO.	TOTAL SHEETS
1929	494	1	10
FED. ROAD DIST. NO.	STATE	FED. AID PROJ. NO.	FISCAL YEAR
8	ARK.	30 Rec	1929
Emergency Financial F.A.P. No. 30 Reo. Sec. "F"			

INDEX OF SHEETS

Sheet No.	Drwg. No.	Title Sheet
" 2	" 1612	Layout Br. No. 1184.
" 3	" 1613	Det. of Bents & Handrail Br. No. 1184.
" 4	" 1614	" " Piers " " "
" 5	" 1095	Det. of Std. 100' Steel Truss.
" 6	" 1003	" " " 35' R.C.D.G. (3 Girders; 20' Rdwy).
" 7	" 1615	Layout Br. No. 1185.
" 8	" 1616	Det. of End Bents Br. No. 1185.
" 9	" 1617	" " 100' Concrete Arch Br. No. 1185.
" 10	" 1041	" " Std. 40' R.C.D.G. (2 Girders; 20' Rdwy).

QUANTITIES

Item No.	Item	Qty.
" 13	Dry Excavation for Structures	884. " "
" 13	Wet " " "	435. " "
" 13	Solid Rock Excav. " "	79. " "
" 54	Class-A- Concrete	465.16 " "
" 54	Class-S- Concrete	532.00 " "
" 55	Reinforcing Steel	148339 Lbs.
" 56	Structural Steel (Trusses)	78490 Lbs.
" 74	Concrete Railing	756 Lin. Ft.



SEC.	STA. TO STA.	LENGTH ROADWAY FEET	LENGTH BRIDGES FEET	TOTAL FEET
REG. A	3400 - 189+78	19855	3.571	3.571
REG. D	507+53.9 - 819+100	25936.9	4.893	4.893
NOT REG.	539+41.0 - 589+58	4739	0.897	0.931
REG. B	296+100 - 507+53.9	21163.9	4.009	4.009
REG. E	261+00 - 296+100	26711	5.058	5.058
REG. C	983+36 - 26+100	13351.4	2.528	2.528
REG. F	182+22 - 587+70	13351.4	2.528	2.528
TOTALS		110662.5	20.956	645.16

SEC.	STA. TO STA.	LENGTH ROADWAY FEET	LENGTH BRIDGES FEET	TOTAL FEET
REG. A	0+100 - 248+30	24353	4.613	4.620
* D	248+30 - 489+28	23074	4.371	4.371
NOT REG.	489+28 - 529+22.5	3999.5	0.757	0.779
REG. D	529+22.5 - 584+70	5542.5	1.049	1.049
* B	584+70 - 791+69	20263	3.837	3.837
* E	791+69 - 1070+00	27681	5.242	5.271
* C	1070+00 - 1263+55.2	19212.2	3.438	3.656
TOTALS		124259	23.507	23.507

LAYOUT  
Scale: 1"=1 MI.

GROSS LENGTH OF PROJECT 465'-2" = 0.888 Miles  
NET LENGTH OF PROJECT 465'-2" = 0.888 Miles

Specifications approved by Chief, Bureau of Public Roads, September 28, 1925, and adopted by State Highway Commission May 30, 1925, with revisions and Special Provisions as follows:

REVISIONS	DATE	BY
Amphlet A	Sept. 1, 1928	June 1, 1929
" B	" "	" "
" C	" "	" "
" D	July 1, 1928	Nov. 24, 1928
" E	" "	" "
" F	" "	" "
" G	" "	" "
" H	" "	" "
" I	May 30, 1925	May 30, 1925
" J	Jan. 1, 1929	June 1, 1929
" K	May 30, 1925	May 30, 1925
" L	Jan. 1, 1929	June 1, 1929

\* Includes Non-participating Bridges Sta. 539+10 to 539+100 - Sta. 633+40 to 634+30 and participating Bridge Sta. 756+35 to 756+135

APPROVED \_\_\_\_\_  
COMMISSIONER - STATE LANDS, HIGHWAYS AND IMPROVEMENTS

APPROVED \_\_\_\_\_  
STATE HIGHWAY ENGINEER

RECOMMENDED FOR APPROVAL \_\_\_\_\_  
DISTRICT ENGINEER - U.S. BUREAU OF PUBLIC ROADS

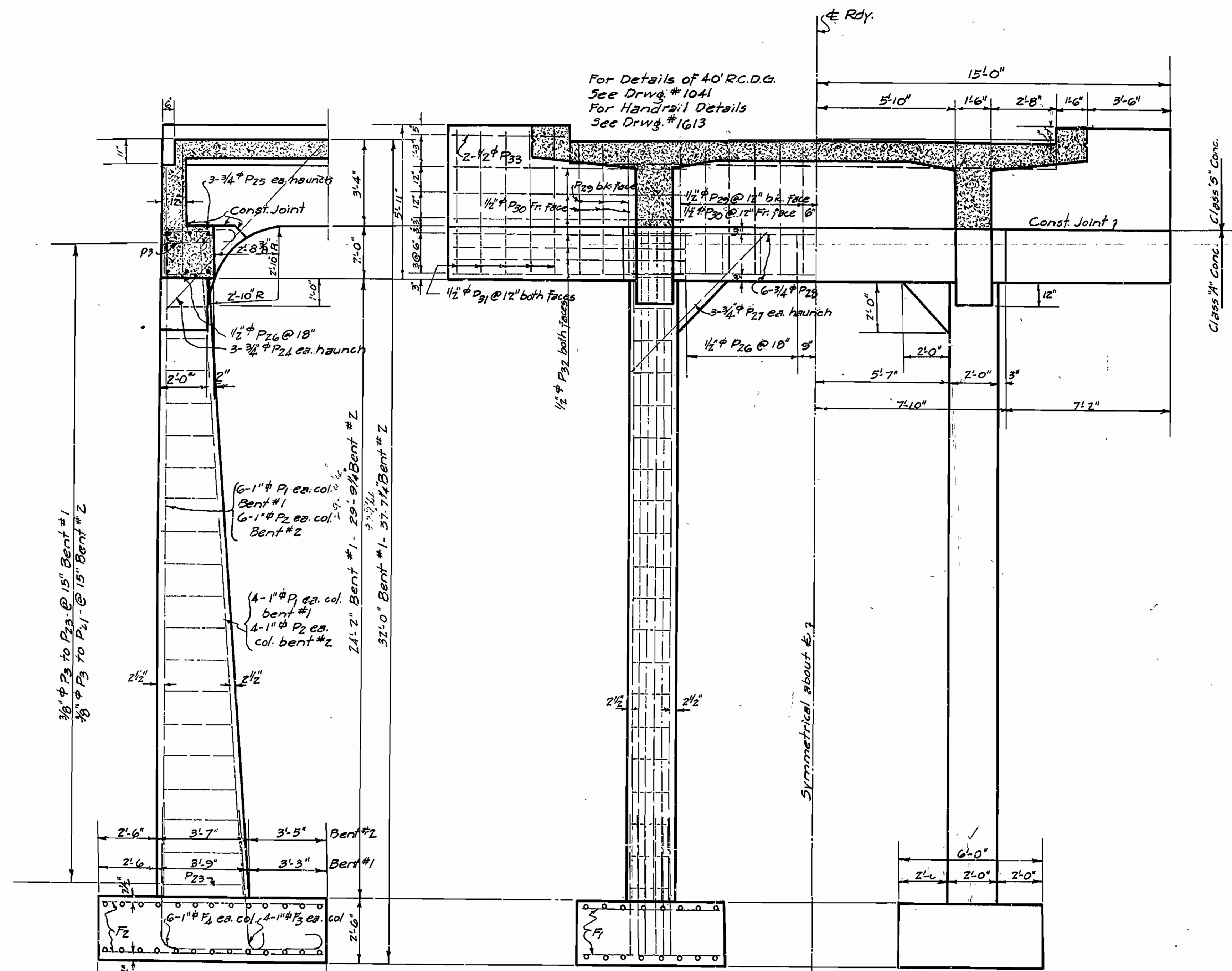
RECOMMENDED FOR APPROVAL \_\_\_\_\_  
CHIEF ENGINEER - U.S. BUREAU OF PUBLIC ROADS

APPROVED \_\_\_\_\_  
DIRECTOR - U.S. BUREAU OF PUBLIC ROADS

M.B. Lamm  
BRIDGE ENGINEER

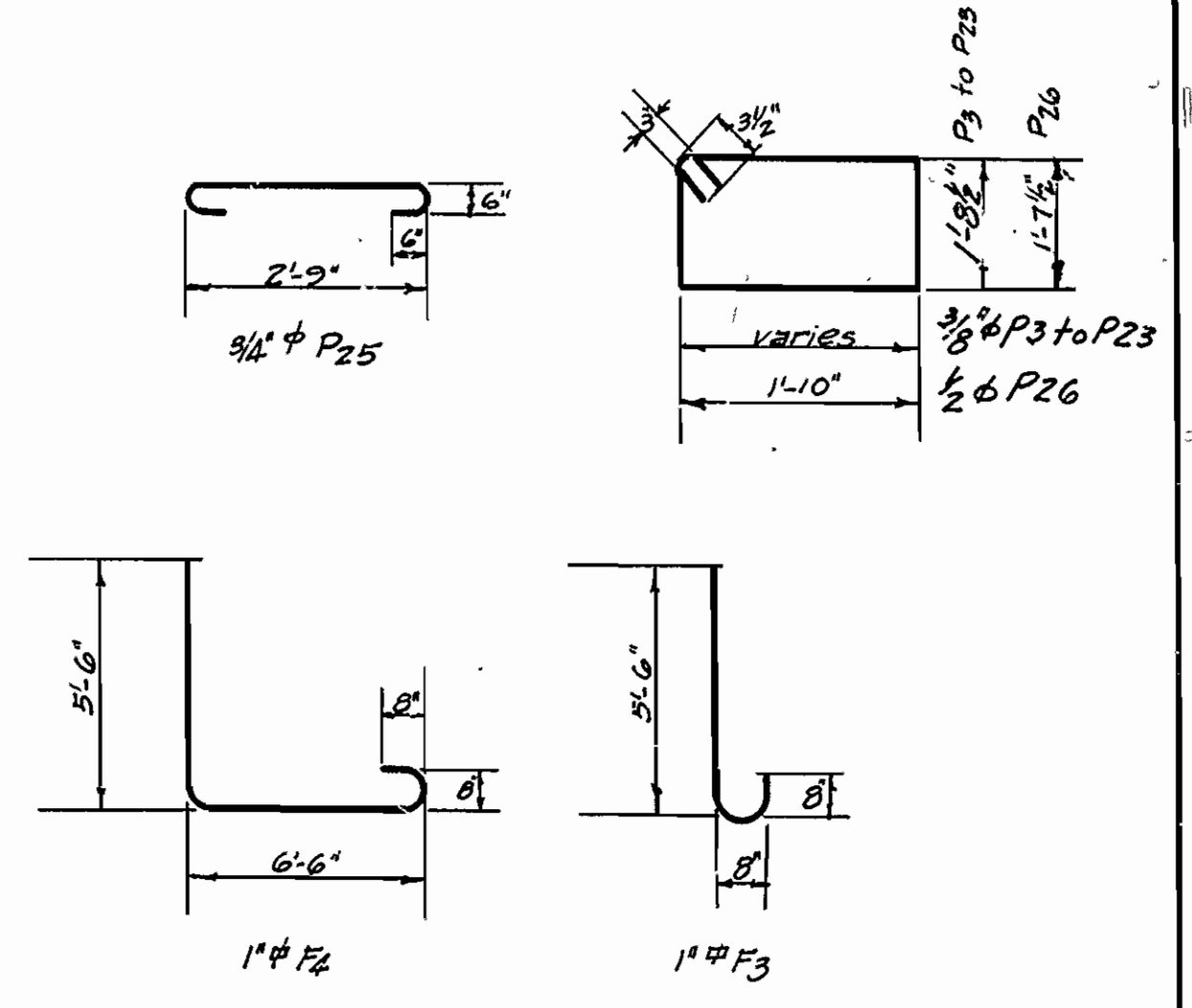


FISCAL YEAR		JOB NO		SHEET NO		TOTAL SHEETS	
1970		492		8		10	
DETAILS OF BENTS OVER GAR CREEK, FRANKLIN COUNTY, ARK.							
FED. ROAD DIST. NO.	STATE	FED. AID PROJ. NO.	FISCAL YEAR	SHEET NO.	TOTAL SHEETS		
6	ARK.	30800		8	10		

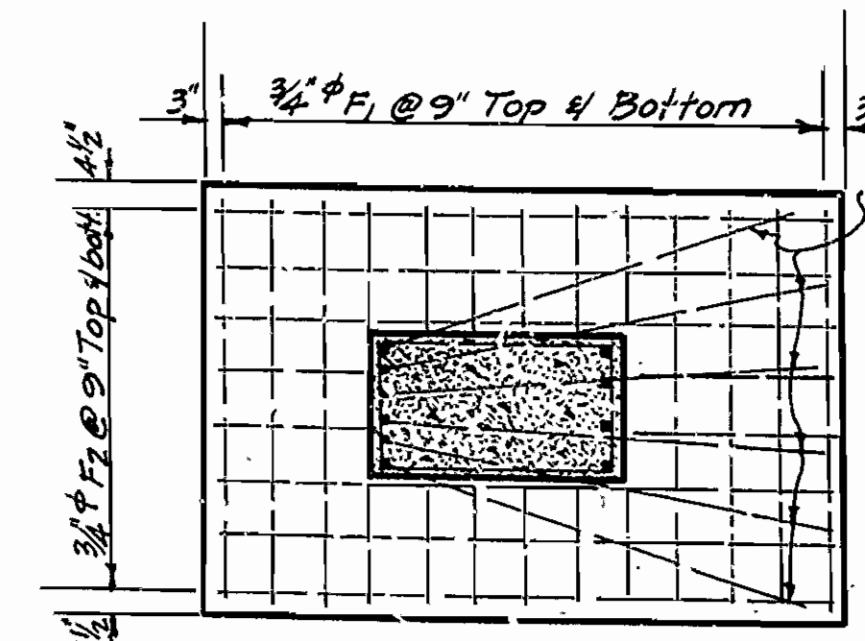


SECTION A-A

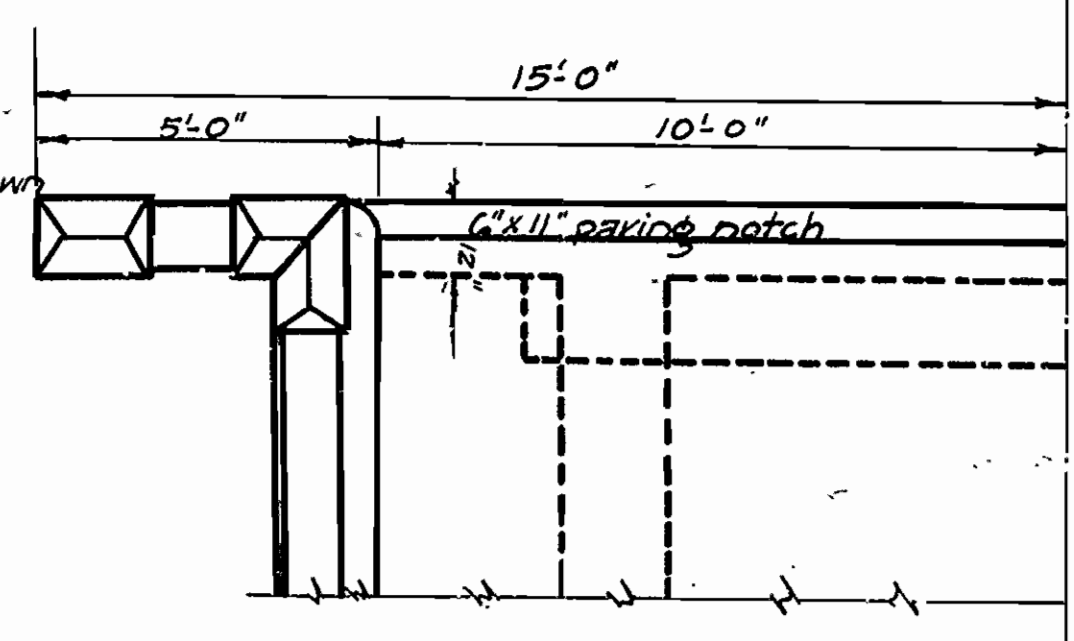
HALF ELEV SHOWING REINF HALF ELEV OF END BENT



For General notes See Drwg. #1041  
Reinf. steel on this sheet  
P1 to P4  
P5 to P33



FOOTING PLAN



HALF PLAN

Reviewed 5-20-57 and depth 66

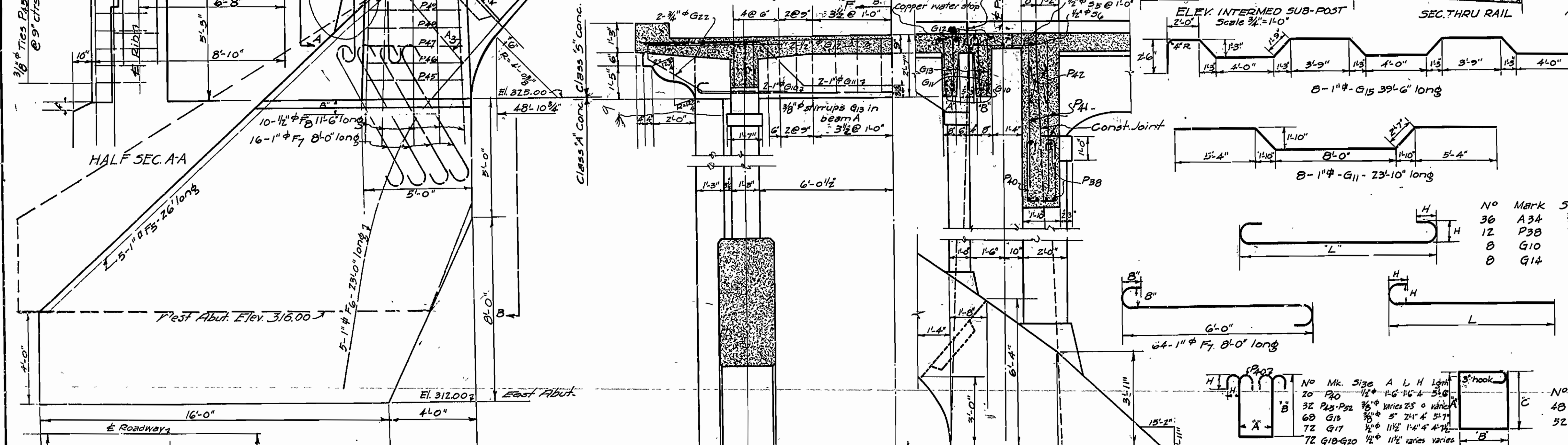
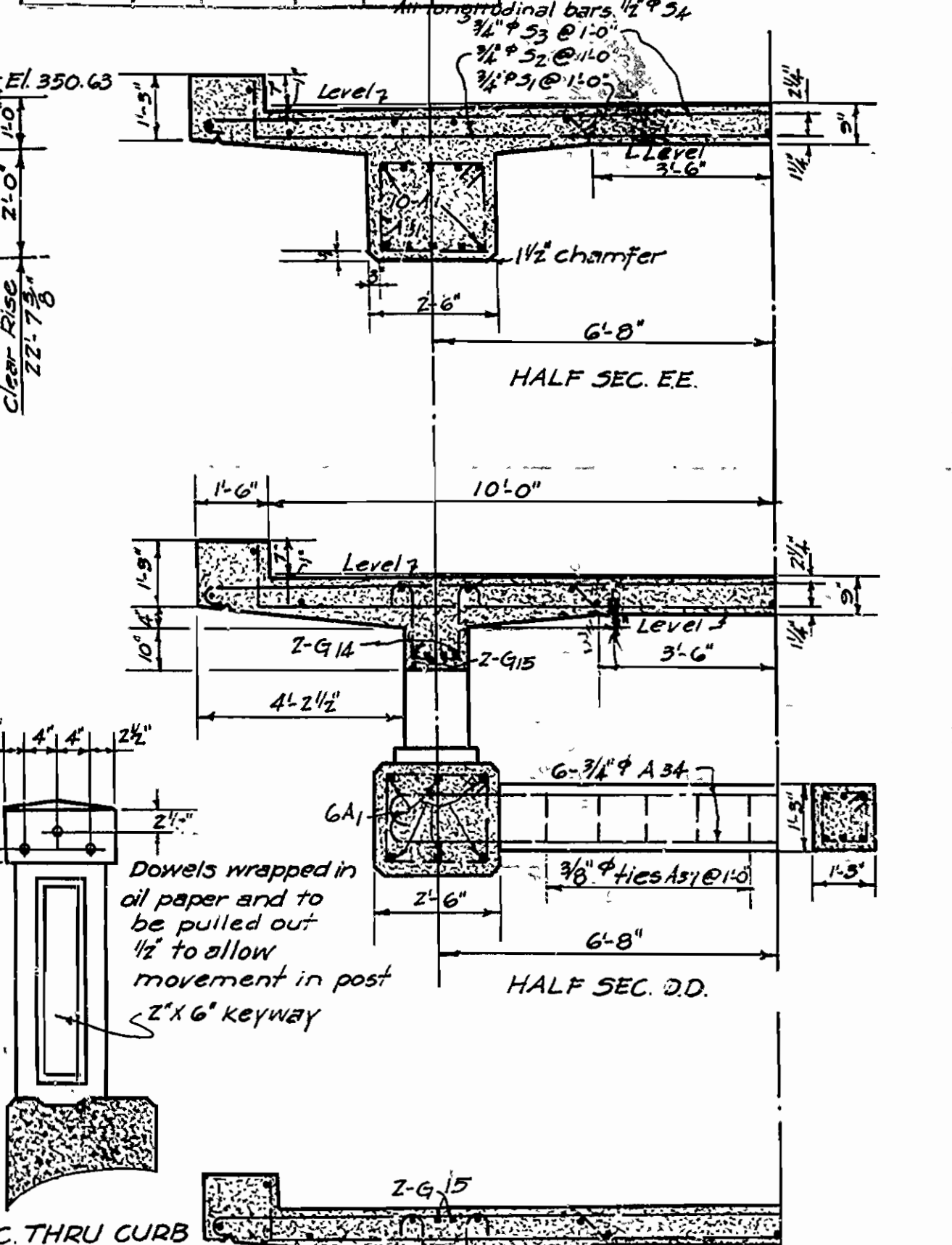
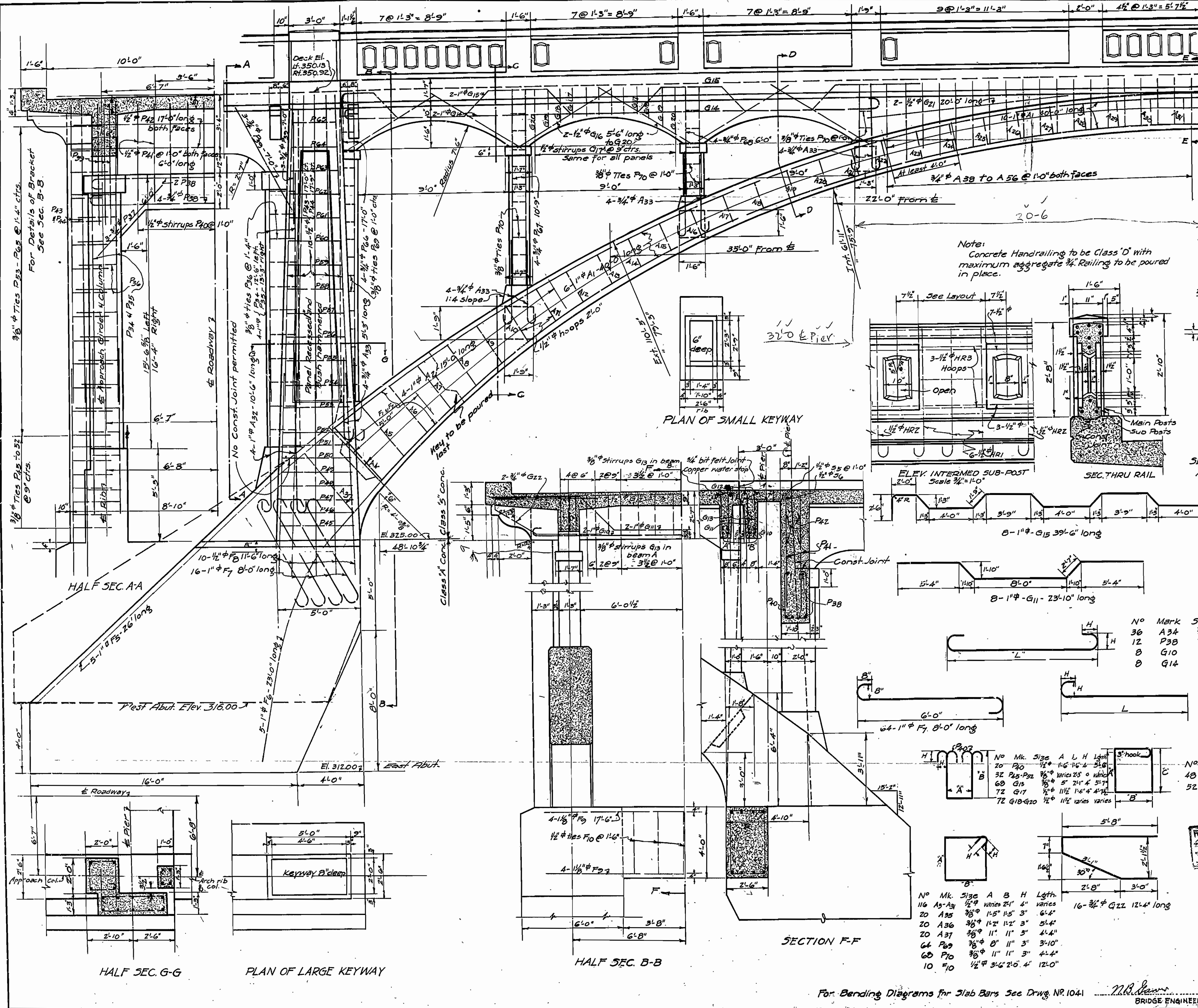
M.B. Lamm  
BRIDGE ENGINEER

DETAILS OF BENTS  
BRIDGE OVER GAR CREEK  
FRANKLIN COUNTY  
ROUTE 64 SEC. 3

ARKANSAS STATE HIGHWAY DEPARTMENT  
LITTLE ROCK, ARK.

Drawn By: L.R.C. Date: 2/1/52  
Traced By: E.M.G. Date: 2/1/52  
Checked By: \_\_\_\_\_ Date: \_\_\_\_\_  
BRIDGE No. 1185 DRAWING No. 1616  
Scale: 3/8" = 1' ft.

FED. ROAD DIST. No.	STATE	FED. AID YEAR	FISCAL YEAR	SHEET No.	TOTAL SHEETS
6	ARK.	30	Rec	9	10



No	Mk	Size	L	H	Lgth.
36	A34	3/8"	15'-0"	6"	16'-6"
12	P38	3/8"	14'-8"	6"	16'-2"
8	G10	1"	17'-0"	8"	19'-0"
8	G14	1"	31'-3"	8"	33'-3"

No	Mk	Size	A	B	C	Lgth.
16	A32	1"	9'-6"	8"	10'-0"	
64	A33	3/4"	4'-6"	6"	5'-3"	

No	Mk	Size	A	B	C	Lgth.
20	P20	1/2"	1'-6"	1'-6"	3'-6"	
32	P23-P25	3/8"	varies 2'-0"	4"	varies	
60	G13	3/8"	varies 2'-0"	varies	varies	
72	G17	1/2"	1'-0"	4'-0"	4'-0"	
72	G18-G20	1/2"	1'-0"	varies	varies	

DETAILS OF 100' ARCH SPAN BRIDGE OVER GAR CREEK FRANKLIN COUNTY ROUTE 64 SEC. 3 ARKANSAS STATE HIGHWAY DEPARTMENT LITTLE ROCK, ARK.

Drawn By: G.S.V. Date: 2/2/29  
 Traced By: E.M.G. Date: 5/10/29  
 Checked By: \_\_\_\_\_ Date: \_\_\_\_\_

Scale: 3/8" = 1'-0"  
 BRIDGE No 1185 DRAWING No 1617

For Bending Diagrams for Slab Bars See Drawg. No. 1041

